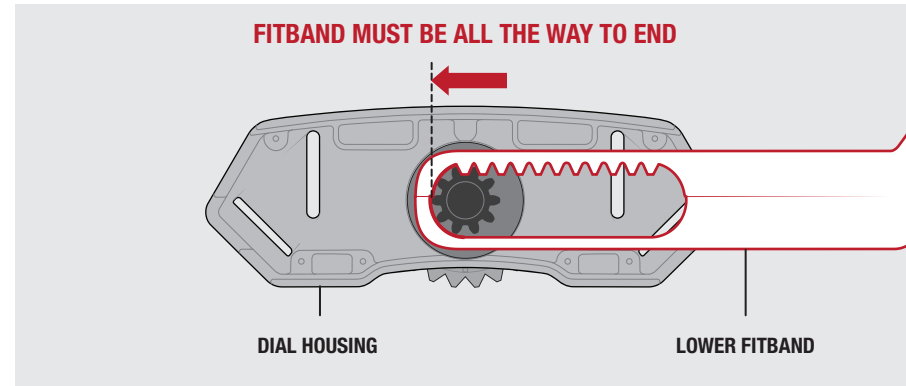


STEP: 8

Place the Lower Fitband over the Pinion gear to its farthest open position.

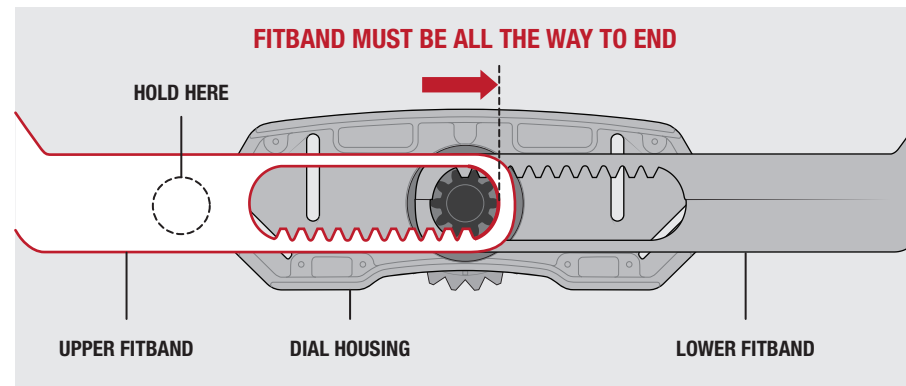
PAY CLOSE ATTENTION TO THE ORIENTATION OF BOTH THE DIAL HOUSING AND THE LOWER FITBAND



STEP: 9

Hold the Upper Fitband down on top of the Lower Fitband at its farthest open position.

BE SURE THE GEAR TEETH ON THE FITBANDS AND PINION ARE ALIGNED.

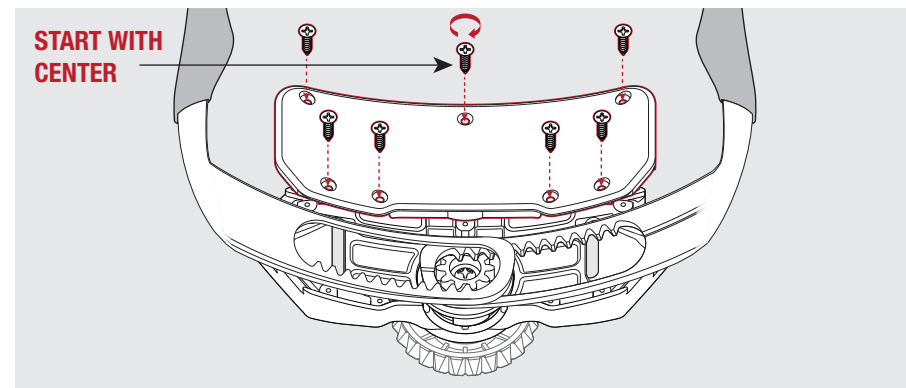


STEP: 10

Carefully place the Housing Cover on top of the Fitbands without letting them slip off the Pinion gears. Once the cover is in place, hold the Housing Cover in place and screw the Housing Screws in place using a #1 Phillips screwdriver.

Check that the parting line between the Dial Housing and the Housing Cover is even and flush.

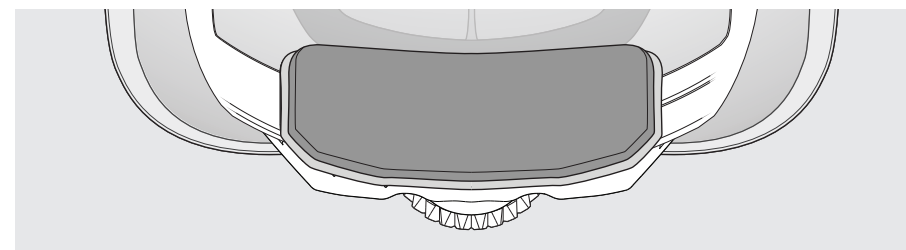
DO NOT OVER TIGHTEN SCREWS



STEP: 11

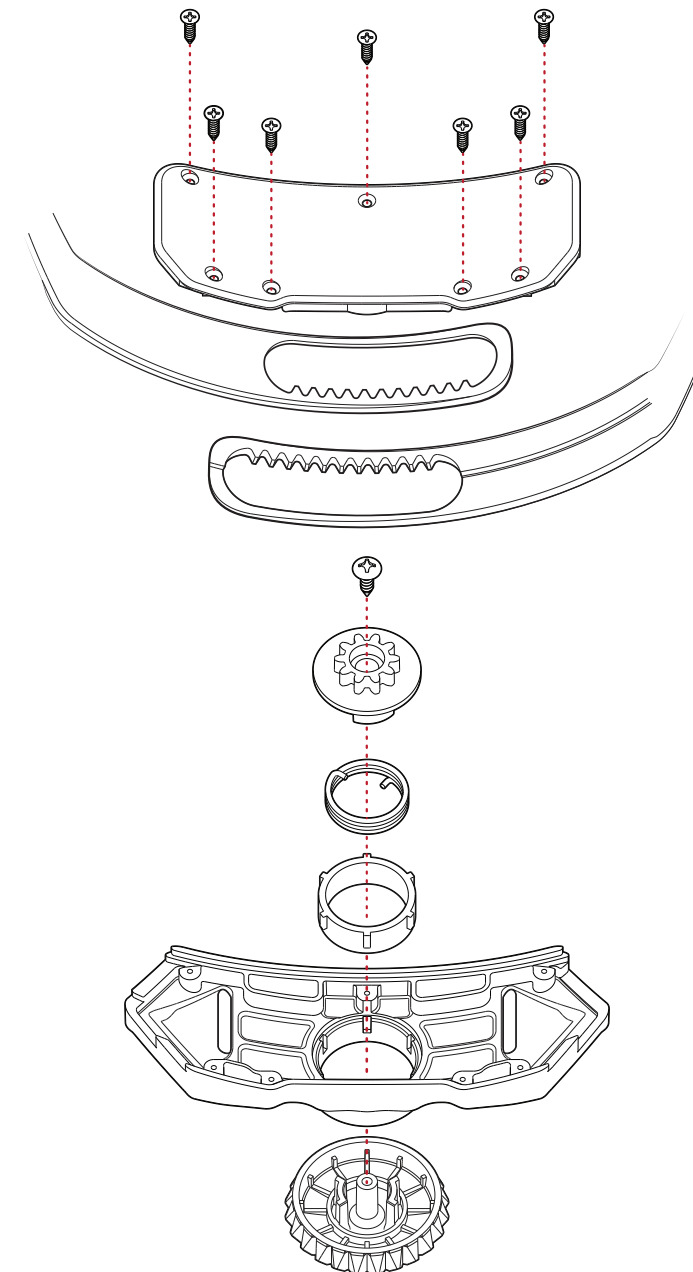
Replace the Nape Comfort Pad from Step 1.

TEST THE NEW REPLACEMENT KNOB TO ENSURE THAT IT IS FUNCTIONING PROPERLY.



Occ-Dial Knob Replacement Kit INSTALLATION INSTRUCTIONS

© OPS-CORE 2014 06-18-000 REV. B



OPS-CORE, INC.
Marine Industrial Park
12 Channel Street
Boston, MA 02210

Tel: 617.670.3547
Fax: 617.670.3581

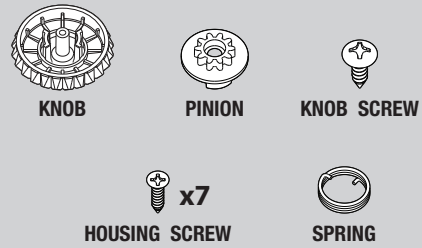
Or visit our website
at www.ops-core.com

www.ops-core.com

INSTALLATION INSTRUCTIONS

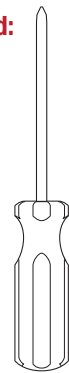
PARTS & TOOLS REQUIRED

Included in Kit:

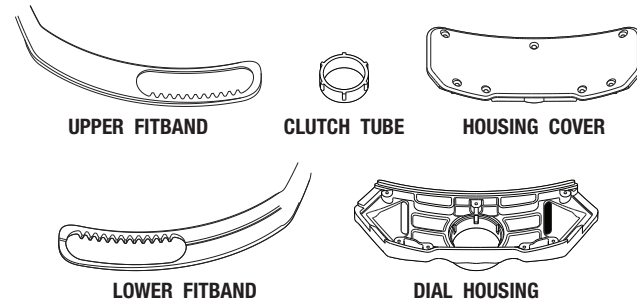


You Will Need:

#1 Phillips
Screwdriver
(Not Included)

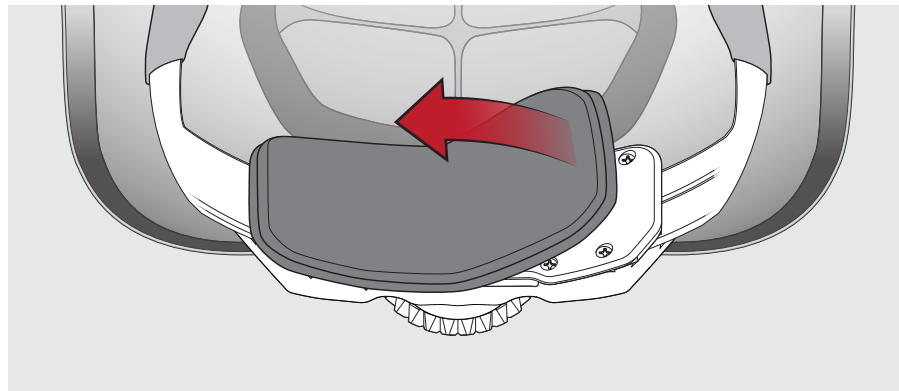


Already in Helmet:



STEP: 1

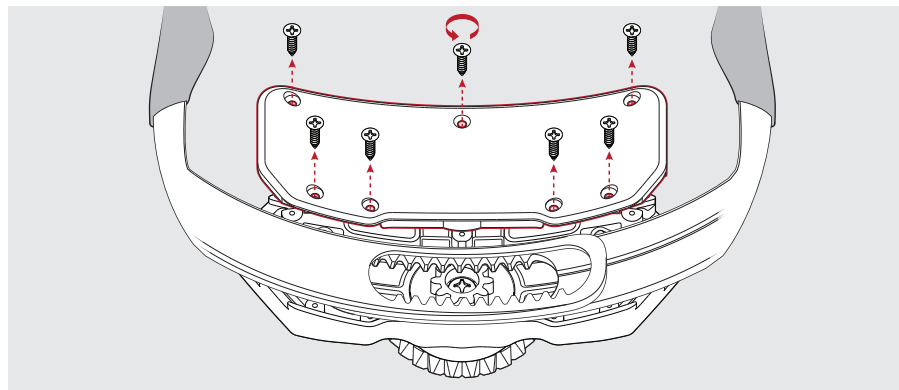
Remove the Nape Comfort Pad from the Housing Cover and set aside.



STEP: 2

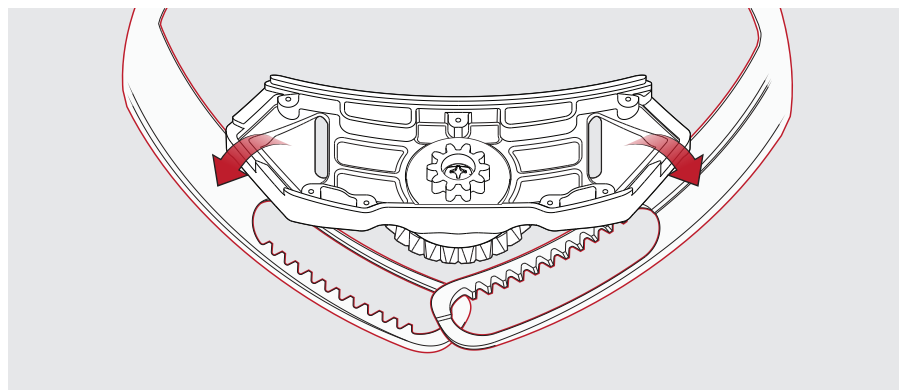
Use #1 Screwdriver to unscrew the 7 Housing Screws.

Remove Housing Cover.



STEP: 3

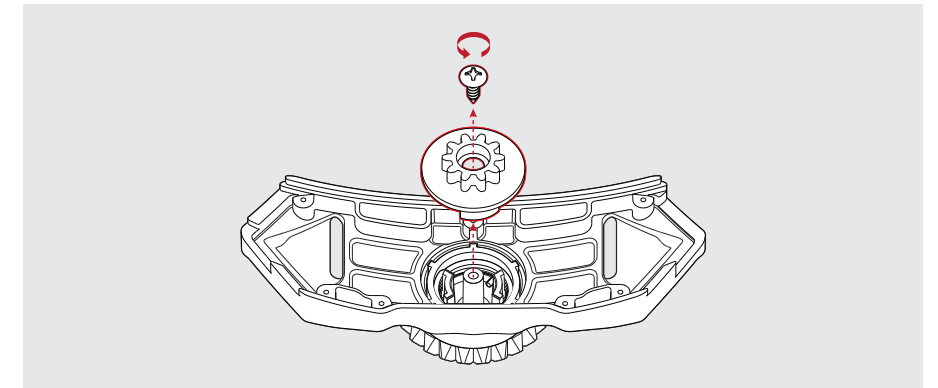
Tuck Fitband ends out of the way.



STEP: 4

Hold the Knob in one hand and unscrew the Knob Screw to remove the Pinion.

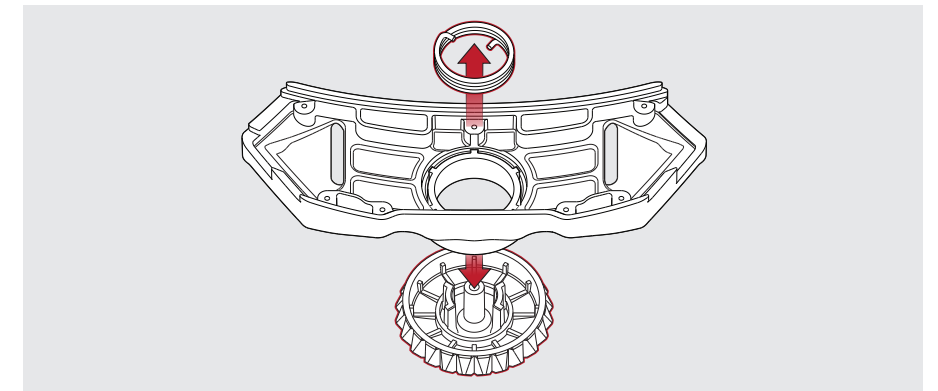
If Knob is broken and/or lost, the Pinion will already be free.



STEP: 5

Remove the old Knob and old Spring.

If the Spring is stuck inside the Clutch Tube, pull on the end of the Spring to release.

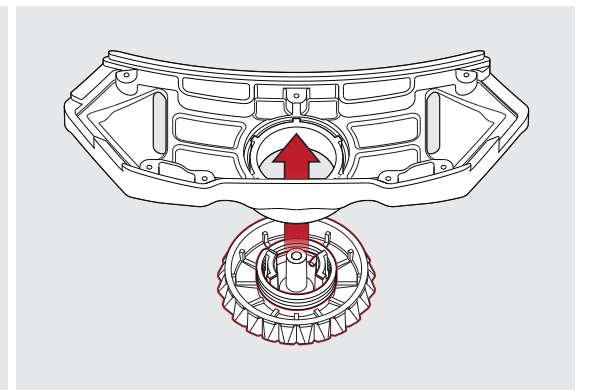
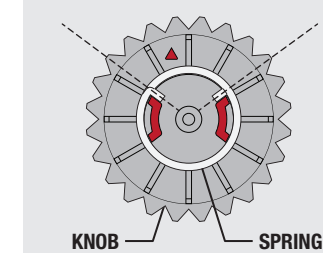


STEP: 6

CRITICAL STEP: PAY CLOSE ATTENTION TO INSTRUCTIONS

Gently twist and push the new Knob/Spring into the Clutch Tube. If the Spring and Knob are separated, align the triangle mark (▲) on the Knob between the Spring ends.

Triangle Must Fall Between Spring-Ends



STEP: 7

While holding the Knob, place the Pinion into the Spring. Tighten the Knob Screw until snug. The Knob should turn freely in both directions. Knob should not rattle in and out.

DO NOT OVER TIGHTEN SCREW

STEP: 8 NEXT PAGE →

